



## Variable Rate Technology WITH FARMERS AIR

You might have heard a bit about a new technology spreading system called Variable Rate. We've pulled all the facts together to explain the what, why and how so you can easily understand what it means for you and your farm.

### What is Variable Rate technology?

Variable rate (VR) is a new technology that helps aerial top dressers apply the right amount of fertiliser to the right parts of hill country farms to reduce nutrient run off, minimise input costs for farmers by avoiding wasteful application to unproductive land, and promote environmental sustainability.

VR takes into account slopes, sensitive land, boundaries, aspect, stocking rate, soil fertility, production yield. It connects wirelessly to the plane's computer which automatically controls the door release.

### Why it is being used now?

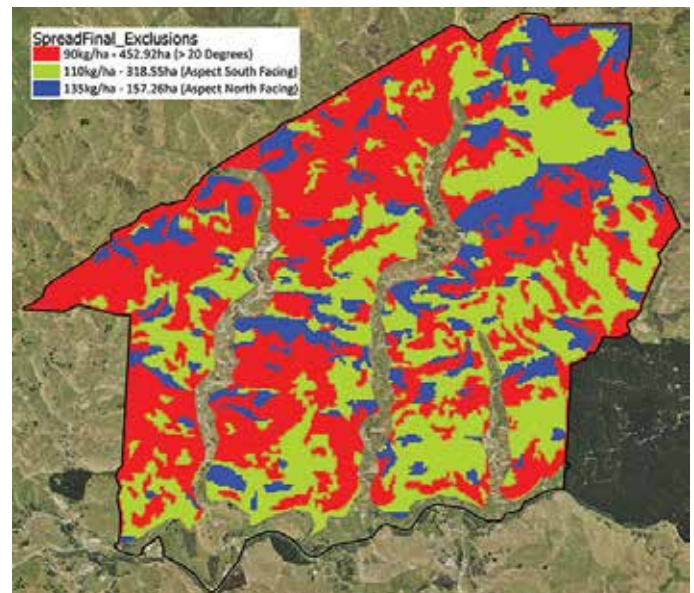
Local councils have been researching variable rate technology for years in partnership with MPI. It has taken time for them to map all farm land and create the technology to take advantage of that mapping to aid more precise fertiliser applications that cater for the environment at the same time.

### How does it benefit me?

VR allows you to be more efficient and effective in the way you spread your fertiliser saving you money. You can then deploy fertiliser you might have previously spread on sensitive or unproductive land and make it go further on more productive yielding areas.

VR also provides you with accurate and precise proof of placement.

By using VR you are protecting yourself from the volatility of fertiliser prices by only using what you need, and nothing you don't. That's a win for you, your bank balance and the environment.



### How does it work?

VR works with any farm mapping software (May My Farm, TracMap, FarmIQ, Ravensdown and Ballance).

Once we have an accurate 3D map, they get run through our ArcGIS algorithm to produce a slope and aspect map that can be set at different slope angles to help identify areas on your property that meet the 10% slope regulations for cropping.

### Want to know more?

<https://www.mpi.govt.nz/dmsdocument/46729-The-use-of-variable-rate-fertiliserapplications-in-NZ-hill-country>



[www.farmersair.co.nz](http://www.farmersair.co.nz)