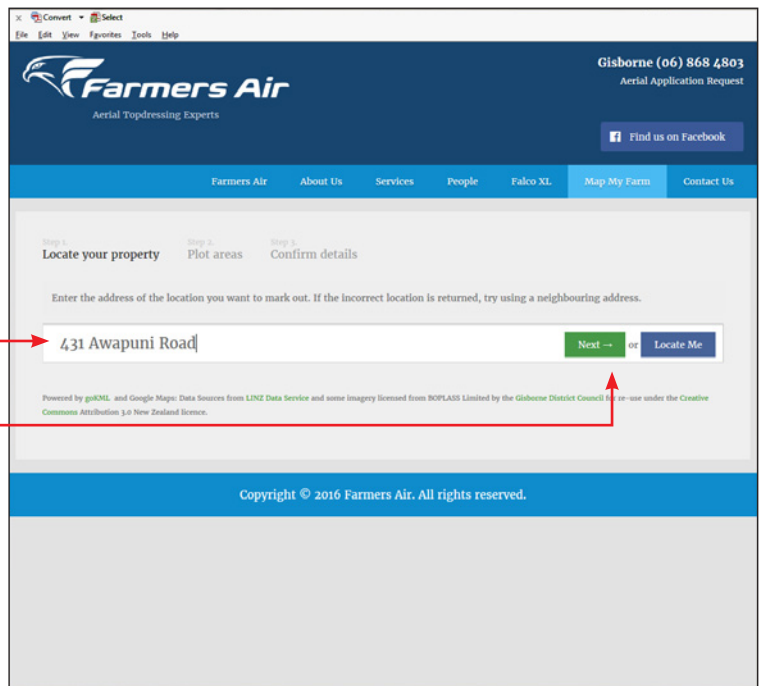


## STEP 1: LOCATE YOUR PROPERTY

1. Go to [www.farmersair.co.nz/map-my-farm/](http://www.farmersair.co.nz/map-my-farm/)
2. Type in the address of farm you would like to map.
3. Click NEXT or LOCATE ME



## STEP 2: PLOT AREAS

1. You should now see an aerial view of your property.

### TOOLS:

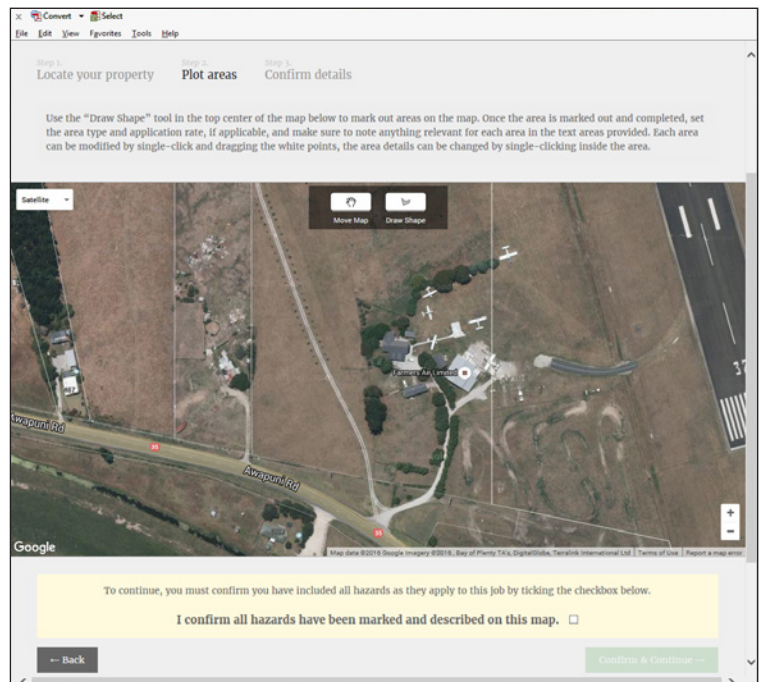
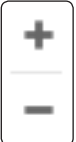
**Move Map:** Allows map to be moved around to see more of your farm.



**Draw shape:** What you will use to draw the shapes of the areas you would like mapped.



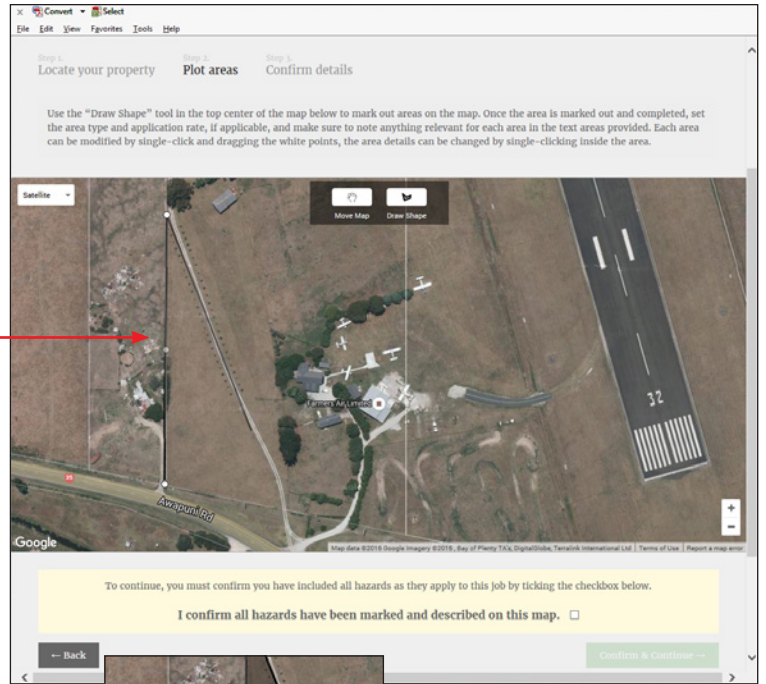
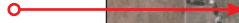
**Enlarge/Reduce:** Reduces or enlarges the size the map for easy viewing.



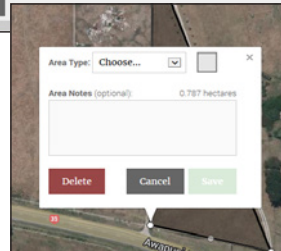
## STEP 2: PLOT AREAS (continued)

- Click on DRAW SHAPE tool and click on the map on the area you would like to mark. Click on the beginning node to close the shape.

**Note:** Don't worry if you don't mark the area exactly as you can click and move each node after the shape is drawn. You can also add more nodes by clicking on the line between two nodes.

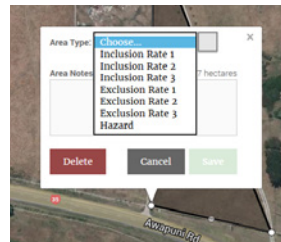


- Once shape is closed you will see a dialogue box to input the details for that shape.

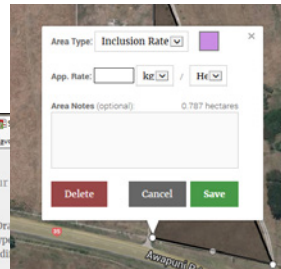


- Select an Area Type from the drop down list. Inclusion Rate = Area you would like sprayed. Exclusion Rate = Area you would like excluded.

**Note:** Exclusion Rate number (1, 2 or 3) should match the same as the Inclusion Rate for this area (e.g if the shape selected is marked as Inclusion Rate 1, then any Exclusion Rate shapes over this area should be marked Exclusion Rate 1. Otherwise the spray rate will not be calculated correctly).



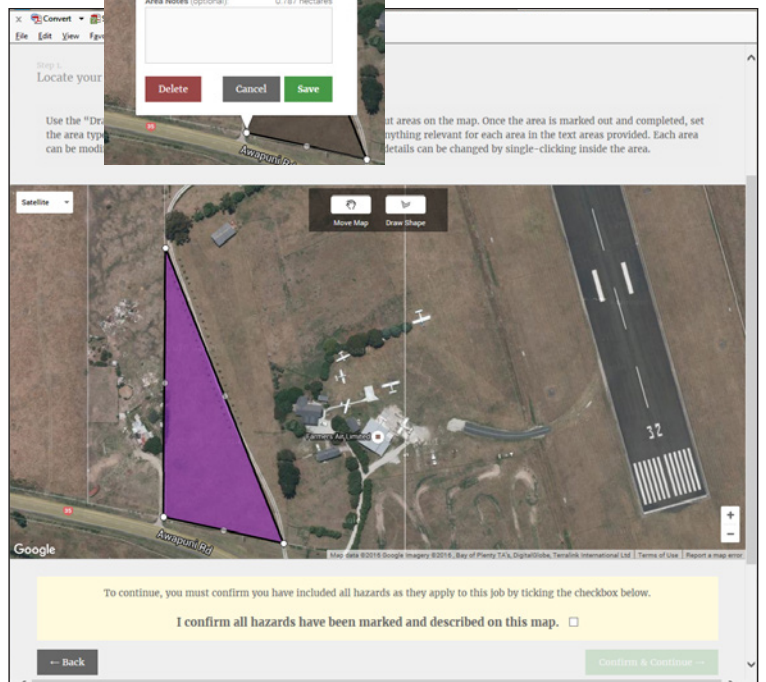
- Then fill in the application rate you would like for this area, and (if applicable) any other notes/comments you would like us to know.



- Click SAVE once completed. You can edit the information on any shape by simply clicking on the shape again and the dialogue box will reappear.

- Once completed your shape should change to the colour of the Area Type selected.

- Inclusion Rate 1 = purple
- Exclusion Rate 1 = red with purple outline
- Inclusion Rate 2 = blue
- Exclusion Rate 2 = red with blue outline
- Inclusion Rate 3 = green
- Exclusion Rate 3 = red with green outline
- Hazard = yellow (**note: If only a line [i.e. representing power line] colour yellow may not be visible on screen and you will only see a black line**)



# MAP MY FARM

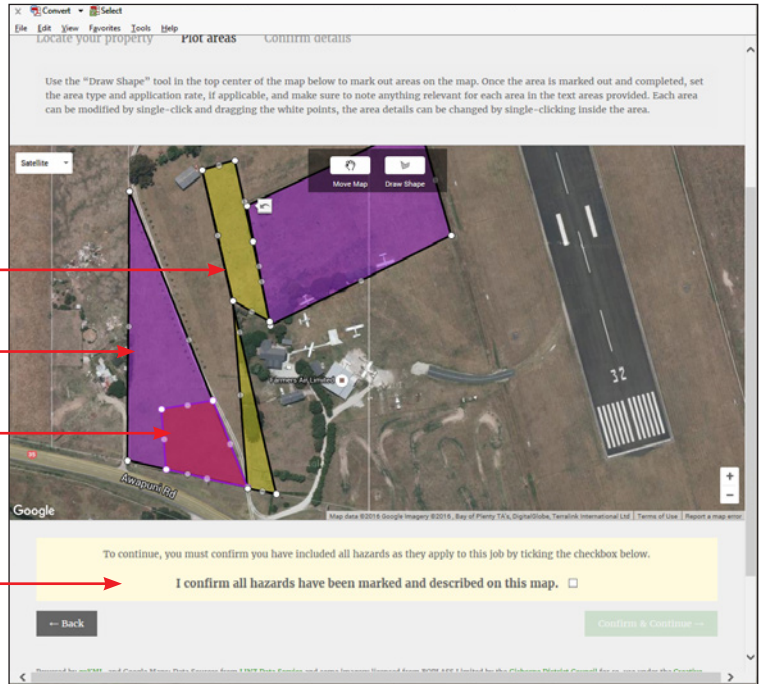
## STEP 2: PLOT AREAS (continued)

- Continue drawing shapes until all areas are completed.

HAZARD

INCLUSION AREA

EXCLUSION AREA



- Check all hazards have been marked and described and check this box to continue.

## STEP 3: CONFIRM DETAILS

- Check Job Overview to ensure all details correct (back button at bottom of screen if you need to go back and change anything on the aerial map).
- Fill in your details.
- Fill in the job details.
- Click SUBMIT JOB ENQUIRY to send form or click GO BACK A STEP to change aerial map details.

Area Type	Application Rate	Inclusion Total	Volume
Inclusion Rate 1	100 kg/ha	14.80 hectares	148,000 kg
Inclusion Rate 2	---	0.000 hectares	---
Inclusion Rate 3	---	0.000 hectares	---
Total tonnage			148,000 kg

- Once order sent, you should see this message. We will contact you within one business day with confirmation of the job.

